



pt. gearindo prakarsa

CONSTRUCTION, ELECTRICAL, MECHANICAL



Table of Contents

PT. Gearindo Prakarsa Overview	3
Vision, Mission & Values	5
Head Office & Workshop	6
Workshop Capability	10
Safety Achievement	16
Certificate Safety Award	17
List of Experience	19
Our Customer/Client	23



PT. Gearindo Prakarsa Overview



Introduction

PT. Gearindo Prakarsa is a national, private-owned company with head office located in Duren Sawit, Jakarta. Established in 1993, currently Gearindo Prakarsa employs more than 700 personnel throughout Indonesia. Its Fabrication area of more than 10.000 square meters is located in Desa Tamansari Kecamatan Setu - Cibitung.

Our experiences include in spools fabrication, valves overhaul, valve actuators, heat exchanger and cooling units as well as to built electrical panels and preparation of MCC for nitrogen plant. We serve all the job especially for the international oil company.

PT. Gearindo Prakarsa fabrication yards is occupied with a complete set of precision equipments, electrical tools, instrumentation equipments, insulation, machining area, blasting/painting area, maintenance shop, warehouse & storage room, tool room, electrical room, X-ray area, and other supporting facilities.

PT. Gearindo Prakarsa has implemented a full commitment of Quality Management System standards applied in all its working procedures since 2003. ISO 9001:2015 allows Gearindo Prakarsa to offer the highest quality control and assurance for its products and services throughout the working process. PT. Gearindo Prakarsa also implements ISO 14001:2015 (Environment anagement System) and ISO 45001:2018 (Occupational Health & Safety Management System).

Scope of Services

PT. Gearindo Prakarsa shops contain a variety of precision equipment capable of working to tolerances that will satisfy your most stringent specifications. PT. Gearindo Prakarsa available to experienced in the following:

- **Technical Service for Engineering/Design, Construction and Commissioning;**
- **Steel Fabrication & Construction;**
- **Piping Fabrication & Installation;**
- **Maintenance;**
- **Electrical & Instrumentation Work;**
- **Welding Services;**
- **Blasting Painting; and**
- **Labor Supply.**
- **Magnetic Robotic Crawler Provide UHPWJ**

PT. Gearindo Prakarsa Services

Gearindo Prakarsa has implemented a full commitment of Quality Management System standards applied in all its working procedures since 2003. ISO 14001:2015 (Environment anagement System) and ISO 45001:2018 (Occupational Health & Safety Management System) allows Gearindo Prakarsa to offer the highest quality control and assurance for its products and services trough out the working process, including: engineering, procurement, fabrication, construction, installation, and other on-site activities. Gearindo Prakarsa offers services in electrical, mechanical, electrical & process instrumentation, civil, structural, pipelines, storage tanks, and construction for Oil & Gas Industry in Indonesia. Gearindo Prakarsa provides a full range of services to its clients, start from site survey, engineering design, CAD drawing, cost estimate, procurement, supply, quality control/quality assurance, fabrication, construction, installation, and commissioning.

Gearindo Prakarsa past and current project includes:

1. Engineering design, construction, installation, and commissioning;
2. Steel structure for building, tower, etc.;
3. Pipe works: flow line (water, gas, oil), LGP system (complete with instrument accessories), pipe spool, plumbing (with hydrant), etc.;
4. Fabrication of applied-mold with different sizes, steel support, bracket, etc.;
5. Machining: steel machining (of pump, compressor, valve), etc.;
6. Onsite inspection of equipment and installation system with emphasis in troubleshooting and correction handling;
7. Valves Reconditioning (different types and sizes);
8. Repair and overhauling of compressor, pump, etc.;
9. Electrical/instrumentation: power supply system, lighting plant system, panel and UPS Installation;
10. Labor supply, with more than 10 years experience (Engineer, Welding Inspector, Welder SMAW/GTAW, Rigger, Scaffolders, Painter, Blaster, etc.).





Vision

To be the most trusted partner in providing high-quality and satisfactory services.

Mission

To deliver highest value to our shareholders and customers by providing high-quality services, fostering a great teamwork and collaboration, and upholding the standards of safety, health, and environmental responsibility.

Values

GEARS

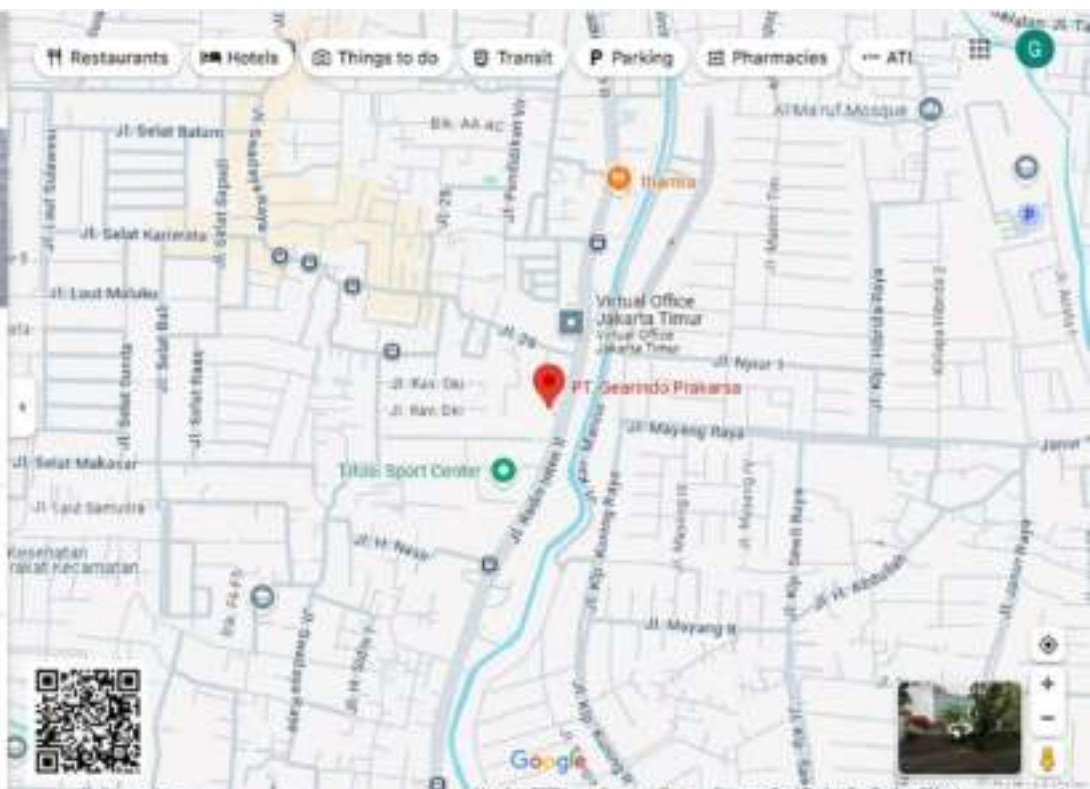
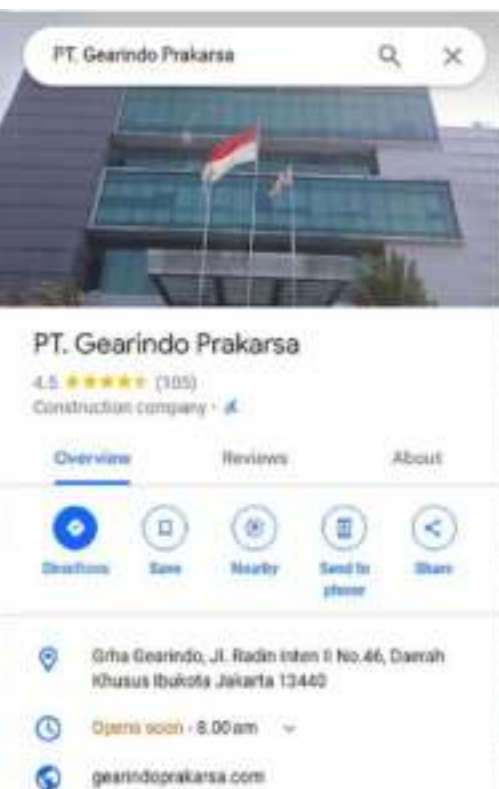
- Great Teamwork & Collaboration
- Excellence Services
- Always Customer Focus
- Reliable and Trusted
- Safety, Health & Environmental Compliance




Head Office


Company Name PT Gearindo Prakarsa
Address Jl. Radin Inten II No. 46 Duren Sawit
 JAKARTA TIMUR 13440
Phone (021) 8690 1750
Facsimile (021) 864 3104, 865 7121
Email gearindoprakarsa@cbn.net.id
Website www.gearindoprakarsa.com

Contact Person
Mrs. Dian Hesti Setiawati - President Director
Mr. Dimas Sugeng Rachmadi - Senior Manager
 Operations & Projects
Mrs. Tutut Juwanita - Senior Manager General
 Affairs & HR





Cubical Office for 70 people with
9 Supervisor/Manager rooms
Head Office, on the 3rd Floor.



Cubical Office for 70 people with
9 Supervisor/Manager rooms
Head Office, on the 5rd Floor.



Meeting Room

Boardroom or Executive Meeting Room with 20 seats complete with white board, wide screen for overhead projector and a big TV.



Ballroom

Ballroom Capacity on the 6th Floor can accommodate 200 - 300 people.





Workshop

WORKSHOP I

Jl. MT. Haryono No. 78
Ds. Taman Sari, Kec. Setu,
Bekasi 17320 JAWA BARAT
Phone : (021) 8260 2121, 8260 2222
Fax : (021) 8260 2345



WORKSHOP II

Jl. Raya Margomulyo No. 53 A
Balongsari, Kec. Tandes
Surabaya 60186 JAWA TIMUR
Phone : (031) 749 2099
Fax : (031) 749 5453

Workshop Capability

WORKSHOP JAKARTA YARD CAPACITY AND CURRENT WORKLOAD OF THE YARD

Total Area Work Shop	12.940 M ²
Total Open Area	5.900 M ²
Outside Storage Area	1.407 M ²
Painting & Blasting Area	1.352 M ²
Fabrication Area Total	2.795 M ²
Space Working Load	1.487 M ²

Workshop Facilities:

- 6 phone lines
- 1 facsimile line
- B/W printers
- Color printers
- Copy machine
- Scanner
- CCTV
- Internet & email line.

Support Facilities:

- Dark Room
- Blasting / painting area
- Machinery equipments
- Welding equipments
- Warehouse/storage area
- Material, consumable and tool room
- Maintenance room
- Loading area
- Spacious parking area for trucks
- Overhead crane until 10Ton.
- Large meeting room
- Client representative room c/w internet connection for each room.
- Security room
- Praying room

WORKSHOP SURABAYA YARD CAPACITY AND CURRENT WORKLOAD OF THE YARD

Total Area Work Shop	3.600 M ²
Total Open Area	500 M ²
Outside Storage Area	100 M ²
Painting & Blasting Area	100 M ²
Fabrication Area Total	1.500 M ²
Use for Fabrication	400 M ²
Space Working Load	550 M ²

Workshop Facilities:

- 2 phone lines
- 1 facsimile line
- 1 unit color printer
- 1 unit B/W printer
- 1 scanner
- 1 unit copy machine
- Internet & email line

Support Facilities :

- Dark Room
- Blasting/painting area
- Machinery equipments
- Welding equipments
- Warehouse/storage area
- Material, consumable and tool room
- Maintenance room
- Loading area
- Spacious parking area.
- Overhead crane until 3 Ton
- Large meeting room
- Mess capacity 20 person for 24 hours working services
- Client representative room c/w internet connection.
- Security room
- Praying room
- Operational car

Overhead Crane 10 Ton



Overhead Crane 7,5 Ton



PT Gearindo Prakarsa has sufficient numbers machines, tools, equipments, fabrication facilities, and capable installations teams to support your needs.

Machinery

1. Welding Machine C/W Cradle for lifting transfer by crane offshore activities.
2. Portable Compressor Machine C/W, C/W Cradle for lifting transfer by crane offshore activities.
3. Milling M/C.
4. Radial Drill M/C.



Tools & Equipments

1. Tool Sets and other specific equipments
2. Rigging Tools & Equipment Sets
3. Scaffolding Sets
4. Pipe Cutter and Beveller
5. Hydrotest Equipments
6. Forklift and Manual Hydraulic Truck
7. Sand Blasting and Painting



Steel Structure Fabrication



Radioactive Storage Facility

Located in back of workshop **Barricade**, We cover the radioactive area with warning sign and safety line.



Forklift with capacity 5 Ton



Manual Hydraulic Truck

We have proper and sufficient manual hydraulic truck to support our handling material in Workshop.



Portable Drilling Machine

Various size.



Rigging Equipment Set

Storage in Tools Room



Hydraulic Press Machine



Vertical Drill



Electrical Power Supply

(PLN) with back up emergency generator set completed with Accessories, Engine type, Capacity 250 KVA



Telecommunication System and Connection

Gearindo have develop telecommunication system use Telkom & PABX.



Our fabrication yards in our workshops are well equipped to support our client needs.

Magnetic Robot Crawler

Versatile Magnetic Crawler for vertical cleaning of large flat, unobstructed areas. The Magnetic Crawler can be converted to a swing arm with 8 sapphire or diamond jets for removal of marine growth, general washing or cleaning along the edges or to a vacuum/dome cover remotely operated crawler with rotating nozzle carrier and up to 20 sapphire or diamond jets for a cleaning path of 400mm to WJ-2 (equivalent to Sa 2.5).

With four independent electric motors for extra traction and sharp turns and strong magnetic attraction (200% stronger than the nearest rival), the Magnetic Crawler can outperform all rivals. This machine will be operate with UHPWJ 1 Unit.





Our qualified installation team with complete hand tools are always ready to support your needs upon requests.



Administration Office

The administration office shall at minimum comprise of:

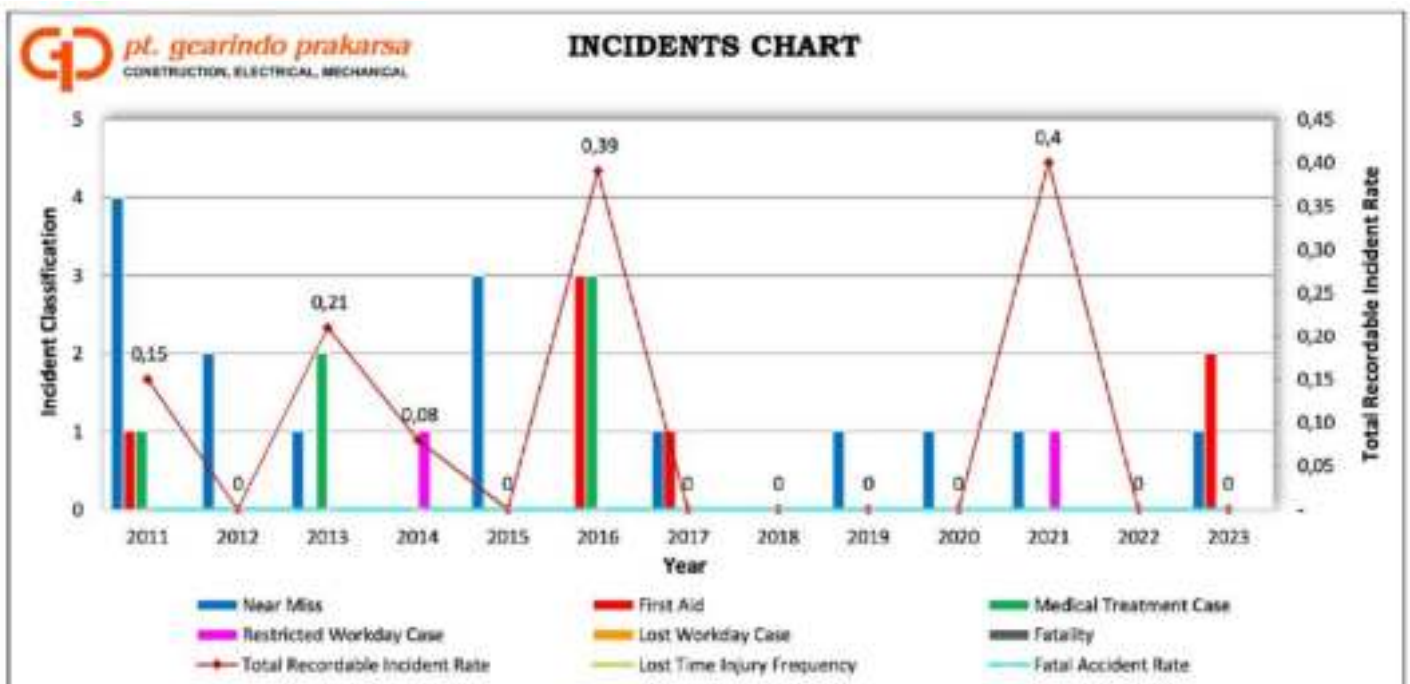
- Meeting Room
- Office for BP Representative
- Document Room
- Laptop Computer & Desktop Computer
- Photo Copy Machine
- Printer and Scanner



Safety Achievement

Safety Man Hour

PT. Gearindo Prakarsa has achieved **over 28 million** Safety Man Hours (per December 2024).



Certificate Safety Award





List of Experiences

BP Berau Ltd. / BP Indonesia

Provision and installation of Main shaft of composter machine & Dewatering machine and shorting table:

- Offshore Production Facilities services, Pressure Vessel/ Boiler, Piping/Mech, Surface Riser, Subsea Pipeline Repair, Hot&Cold Insulation, Fiber Reinforcement Plastic (FRP).
- Blasting and Painting, Coating/Wrapping, Scaffolding, Electrical & Instrumentation, Structural Work, Re-vamp, and
- Others Special Project, Jumping Rope Works, CEM Team, Fabrication & Installation, Construction/Field Engineering Support & HSE.

Chevron Indonesia Company

Provision of Electrical and Instrumentation Services:

- Provide Manpower include Tools & Equipment for Onshore Maintenance Work, Construction and Installation,
- Construction Welding Services:
- Construction and Installation, Repair and Modification Work for Electrical and Instrumentation Services that are carried out by FE&CP Department.

Clyde & Co

- Valve Maintenance Services & Valve Repair.
- Facility General Cleaning.
- Pre-Installation Surveys & Pre-Fabrication Piping,
- Surface preparation & Welding Works.

Chevron / Caltex Pacific Indonesia

Contract Services for Terminal Operation Maintenance Facilities at Dumai:

- Onshore Fabrication Work.
- Procurement and Material Control.
- Construction and Installation.
- Repair Work and Minor Fabrication, and
- Maintenance Work that are carried out by Maintenance Department.

Fabrication Pig Launcher and Pig Receiver 12", 10" & 6":

- Fabrication of Pig Launcher and Pig Receiver at Workshop PT Gearindo Prakarsa.
- Total Quantity 24 unit.

Pipeline Modification and Installation at Rumbai:

- Piping/Mechanical Supervisor,
- Piping/Mechanical Foreman, Drafter, Strutural/Piping Fitter, Strutural/Piping Welder, Blaster/Painter.

ConocoPhillips Indonesia Inc. Ltd. / Medco E&P Natuna Ltd.

Micro and Small Modification Project at Block B Natuna Sea Area:

- Engineering, pre-fabrication of piping (typically carbon steel, stainless steel and Duplex) structural works, surface preparation and painting works, electrical and instrumentation works,
- Offshore construction and installation, welding, scaffolding design, supply and erection, NDT and inspection,
- Pre-installation surveys, machining work,
- Material procurement and supply, equipment hire,
- Provision of all drawings and documentation required by and resulting from the Work and the provision of onshore engineering,
- Fabrication, painting, machine shop / work shop facilities and
- Suitably qualified and experienced personnel to carry out the Work.
- Offshore Work, Cleaning surface preparation, material selection, application, coating repair,
- Maintenance to metal surface piping, structures, vessel, building and packaged equipment;

Flowline Modification Belanak Arang B13 Infill:

- Onshore Fabrication Work,
- Offshore Construction Work,
- Procurement and Material Control,
- Repair Work and
- Minor Fabrication Work that are carried out by Production Development Department.

Dayung Camp Renovation Services:

- Civil Renovation,
- Construction and Installation of Dayung Camp and its Modification Floor Plan and
- Other specification due to Company Requirement.

Donggi Senoro LNG

- Execute the work Core Maintenance Support includes the ongoing provision of integrated Contractor labour to support core maintenance activities in the LNG Plant.
- Execute planned shutdowns in the LNG Train on an approximate 3 yearly basis to perform turbo-machinery overhauls, critical equipment repairs, vessel inspections, statutory inspections and project implementation.
- Execute minor projects support examples as Pave a small section of road, Fabricate a new piping spool, Run new lighting circuit, Install new instrument loop.
- Support annual shutdown or turnaround activities.

Freeport Indonesia

Fencing and Maintenance Services:

- Civil Renovation.
- Construction and Installation of Site Area and its Modification Plan, and
- Other specification due to Company Requirement.

PT Geo Dipa Energi (Persero)

Provision of materials and services for modifications of S-Bend PPL-07 PLTP Patuha Unit 1; Modification & maintenance Pipe Support for Piping Anomaly at PLTP Patuha Unit 1.

Gulf Resources

Welding Blanket Services (Kakap) at Natuna:

- Offshore Construction Work,
- Procurement and Material Control,
- Repair Work, and
- Minor Fabrication Work that are carried out by Facility Department.

Harbour Energy (Premier Oil Natuna Sea B.V)

Provision of General Construction, Modification and Installation Services:

- Offshore Production Facilities services.
- Pressure Vessel/Boiler, Piping/Mech, Surface Riser, Subsea Pipeline Repair.
- Hot&Cold Insulation, FRP, Painting; Coating, Scaffolding.
- Electrical & Instrumentation, Structural Construction & HSE.

Engineering, Procurement and Construction for Anoa Topsides Flow Lines Installation and Modification:

- Site survey, Process, Piping & Mechanical, Electrical/Instrumentation, HSE,
- Procurement, Construction, Mechanical Completion, Trial, Pre-Commissioning, Commissioning for Anoa Wellhead Flowlines Connection.

HESS (Indonesia - Pangkah) Ltd.

Provision of LPG Sphere Tank Fireproofing (Outer Insulation) Repair:

- Onshore Processing Facilities services, repair of passive fireproofing material, coating, scaffolding, repair for damage fireproofing material,
- Installation scaffolding, removal and cleaning Fireproofing material, installation passive fireproofing material & HSE.

Design, Fabrication And Construction Services Contract for Ujung Pangkah Onshore – Offshore Facility:

- Flange Management, Insulation Works, Vessel Cleaning, PSV Repair, Valve Repair, Facility General Cleaning.
- Pre-Installation Surveys, Pre-Fabrication Piping, Surface preparation.
- Painting Works, Coating Works, Construction and Installation, Welding Works, Rope Access Maintenance Works, Machining Work.
- Provision of Duplex and Super Duplex Valves.

Major Maintenance Services Contract for Ujung Pangkah Onshore Processing Facilities Gresik, East Java:

- Flange Management, Insulation Works, Vessel Cleaning, PSV Repair, Valve Repair, Facility General Cleaning.
- Pre-Installation Surveys, Pre-Fabrication Piping, Surface preparation, Painting Works, Coating Works, Construction and Installation.
- Welding Works, Rope Access Maintenance Works, Machining Work, Provision of Duplex and Super Duplex Valves.
- Pre-Fabrication of Piping, Structural Works, Surface Preparation, Painting Works, Coating Works,
- Offshore Construction and Installation, Welding, Scaffolding, Rope Access Maintenance Work, NDT and Inspection,

INPEX Masela, LTD.

Manpower Services for Inpex Masela for:

- Professional and for Technical Positions.
- Professional Marine Engineering Manpower Services.

JOB Pertamina - Medco E&P Simenggaris

Provision of Manpower Support Services, Management and Supervision Services in JOB Pertamina-Medco E & P Simenggaris Field operational areas in Simenggaris Kalimantan Utara and Office Jakarta.

Kondur Petroleum S.A.

Installation Services of Subsea Pipeline of Lalang Straits from LWA - LP Platform:

- Subsea pipeline installation including its onshore fabrication.
- Surface towing, Riser Modification, external coating, Railway construction, Trenching, Hydrotest, Anode Protection, and Support Installation.

Replace Fuel Gas Piping System Fabrication:

- Subsea pipeline installation including its onshore fabrication.
- Surface towing, Riser Modification, external coating, Railway construction, Trenching, Hydrotest, Anode Protection, and Support Installation.

Pertamina EP Regional IV

- Manpower Services for Pertamina EP Regional 4 Cepu Professional & Head Office Operations.
- Manpower Services for Pertamina EP Regional 4 Cepu for Administration and Head Office Operations.
- Manpower Services for Pertamina EP Poleng Field Operation.
- Manpower Services for Pertamina EP Cepu Support & Head Office Operation.

Pertamina EP Regional I Sumatera

- Manpower Services for Pertamina EP Support & Administration at Pertamina EP **Jambi Field**.
- Manpower Services for Pertamina EP Support & Operation at Pertamina EP **Lirik Field**.

Pertamina EP - PHE WMO

- Offshore Production Facilities services;
- Pressure Vessel/Boiler, Piping/Mech, Surface Riser, Subsea Pipeline Repair, Hot&Cold Insulation, FRP;
- Painting, Coating, Scaffolding, Electrical & Instrumentation, Structural Construction & HSE.

Pertamina Regional II

Profesional Manpower Support and Services at Pertamina EP Regional 2 Head Office.

Pertamina EP

- Offshore Production Facilities services, Pressure Vessel/Boiler, Piping/Mech, Surface Riser, Subsea Pipeline Repair, Hot&Cold Insulation, Fiber Reinforcement Plastic (FRP).
- Blasting and Painting, Coating/Wrapping, Scaffolding.
- Electrical & Instrumentation, Structural Work, Re-vamp and others Special Project.
- Jumping Rope Works, CEM Team, Fabrication & Installation, Construction/Field Engineering Support & HSE.

Pertamina EP Asset 3

Provision of Offshore EPCI replacement of Production Separator in XA Platform in Jatibarang Field:

- Piping/Mechanical Supervisor.
- Piping/Mechanical Foreman.
- Drafter.
- Structural/Piping Fitter.
- Structural/Piping Welder.
- Blaster/Painter.

7. Pertamina EP Asset 4 Polleng

Provision of Maintenance and Fabrication Services:

- Offshore Production Facilities services, Pressure Vessel/Boiler.
- Piping/Mech, Surface Riser, Subsea Pipeline Repair, Hot&Cold Insulation.
- Fiber Reinforcement Plastic (FRP), Blasting and Painting, Coating/Wrapping, Scaffolding.
- Electrical & Instrumentation, Structural Work, Re-vamp and others Special Project, Jumping Rope Works, CEM Team.
- Fabrication & Installation, Construction/Field Engineering Support & HSE.

PT Pertamina Hulu Kalimantan Timur

Electrical and Instrumentation Services:

- Provide Manpower include Tools & Equipment for Onshore Maintenance Work, Construction and Installation.
- Repair and Modification Work for Electrical and Instrumentation Services that are carried out by FE&CP Department.

PT. PHE ONWJ

Technical Services Contract for Fabrication, Installation and Maintenance:

- Offshore Production Facilities services, Pressure Vessel/Boiler, Piping/Mech, Surface Riser, Subsea Pipeline Repair.
- Hot&Cold Insulation, Fiber Reinforcement Plastic (FRP).
- Blasting and Painting, Coating/Wrapping, Scaffolding, Electrical & Instrumentation.
- Structural Work, Re-vamp and others Special Project.
- Jumping Rope Works, CEM Team, Fabrication & Installation.
- Construction/Field Engineering Support & HSE.

Petrogas (Basin) Ltd

- Repair Alisson Transmission & Maintenance Guarantee Services.
- Repair Travelling Block & Maintenance Guarantee Services.

Petronas Carigali Ketapang II Ltd.

Provision of Facility Maintenance and Repair Services for Bukit Tua and Kepodang Field:

- Provide the Contract Execution Management Team to execute the construction, fabrication, installation and maintenance Services including painting services, provide proper equipment, workshop facilities, and proper tools,
- Provide general crew for offshore location to look after day to day repair work and fabrication maintenance and for minor modification work to existing process piping and machinery supports, electrical and instrumentation.
- Provide Air Compressor and Dryer Rental service,
- Maintain and supervise the operations of the CONTRACTOR's Equipment/Special Tools & Consumables and Spare Parts,
- Provide supervision, materials, supplies, equipment, transportation, and
- Any other items necessary to perform the WORK .

Petronas Carigali Muriah Ltd.

- Execute the work Maintenance for Onshore and Offshore Production Facilities, Piping and Mechanical, Blasting and Painting, Scaffolding, Onshore Fabrication Work,
- Procurement & Material Control,
- Offshore Construction Work, Pressurized habitat, Wrapping, Fiber Reinforcement Plastic (FRP), QA/QC Document.

Saka Indonesia Pangkah Ltd

Profesional and Technical Manpower Support and Services for PGN Saka for the areas of Pangkah, Sesulu, Muria, West Yamdena and Sepinggan.

- Onshore & Offshore Scaffolding Work Equipment set Material, Scaffolding Material, Scaffolding Tools.
- Manpower for Pangkah Onshore and Offshore.

Design, Fabrication and Construction Services Contract for Ujung Pangkah Onshore – Offshore Facility:

- Flange Management, Insulation Works, Vessel Cleaning, PSV Repair, Valve Repair.
- Facility General Cleaning, Pre-Installation Surveys, PreFabrication Piping, Surface preparation, Painting Works, Coating Works, Construction and Installation.
- Welding Works, Rope Access Maintenance Works, Machining Work, Provision of Diplex and Super Duplex Valves.

Santos (Sampang) Pty. Ltd.

Provision of Engineering, Procurement, Fabrication and Installation Services:

- Onshore Fabrication Work, Offshore Construction Work.
- Procurement and Material Control.
- Blasting and Painting, Repair Work and Minor Fabrication.

Provision of Call Out Scaffolding Services:

- Onshore & Offshore Scaffolding Work Equipment set Material.
- Scaffolding Material, Scaffolding Tools, Manpower.

Star Energy Kakap Ltd.

Provision of Kakap Offshore Welding & Fabrication Services:

- Onshore Fabrication Work,
- Offshore Construction Work,
- Procurement and Material Control,
- Repair Work & Minor Fabrication Work carried out by Facility Department.
- Maintenance for Offshore Production Facilities,
- Instrument and Electrical,
- Blasting and Painting, Scaffolding, Fabrication Work.

Star Energy Geothermal (Wayang Windu)

Provision Of Welding Blanket Services:

- Supply welding and related services as requested in the ITP or project scope of work ;
- Supply pre-fabricated workshop welding service;
- Provide field welding services, including cut, surface preparation, fit-up, and welding complete with appropriate tools and equipment;
- Hydrostatic testing equipment and tools;
- Scaffolding and auxiliaries;
- Supply manpower for services;
- Supply materials related to the services;
- Provide heat treatment, hydrostatic, scaffolding and erection, blasting and galvanizing and related administration services.

PTAC Pertamina - PT. Peralahan Arnebatara Natuna (PANatuna)

Flowline Bundle and Riser Fabrication:

- The flowline and riser systems will be constructed and installed separately.
- Flexible hose jumpers will be used to connect between: Trees and flowlines.
- Flowlines and risers.
- Risers and FPSO.

Blasting and Painting Services:

- Perform Onshore and Offshore Blasting and Painting Activities.
- Internal & External Coating.
- Re-Build the surface and damage parts to make the surface back to normal and smooth condition due to pitting and corrosion.

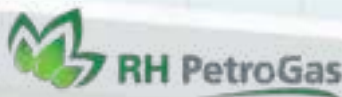
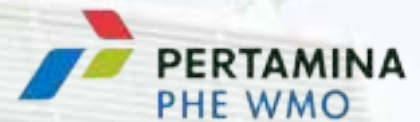
Refurbishment of 6" Flowline Services: Onshore fabrication and Offshore installation of 6" Wellhead Flowline Piping for Udang Alpha Platform including site surveying, hot work, sand blasting, modification of tie-in work, painting and NDT.

Refurbishment of Boat Landing and Rubber Fender of Production Platforms of Udang Field Natuna:

- Design and Fabrication,
- Delivery and Installation of Four (4) sets of Boat Landing and
- Procure the Rubber Fender Modules for replacing the existing modules, including survey, sand blasting, hot work, underwater work, cleaning, coating, painting, and NDT.

Refurbishment of 2" Gas Lift Line: Onshore fabrication and Offshore installation of 2" Gas Lift Line Piping for Udang Alpha Platform including site surveying, hot work, sand blasting, modification of tie-in work, painting and NDT.

Our Customer/Client





GP *pt. gearindo prakarsa*
CONSTRUCTION, ELECTRICAL, MECHANICAL